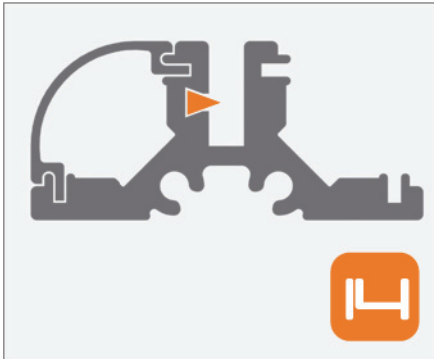
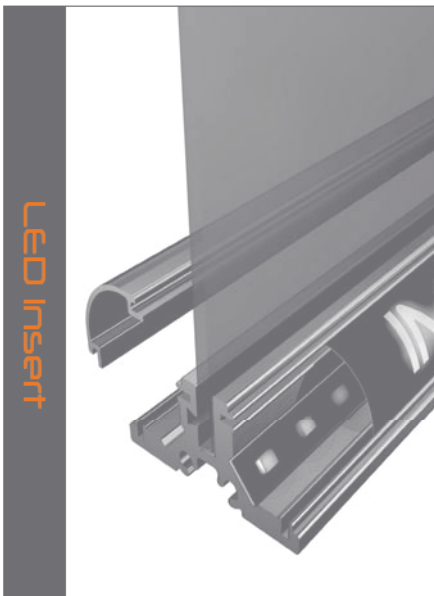


The 'Push.To.Fit' System

Contains Gripflex™ technology that holds inserts tightly in place.



The corner strip N16 can be used as a highlight or with graphics. Alternatively a plastic strip can be inserted into the slots to create different panels. LED's can be fitted behind this to back illuminate the strip.



Defy the constraints of traditional systems and transform your signs and displays into powerful, comprehensive information and merchandising vehicles with Image-N.

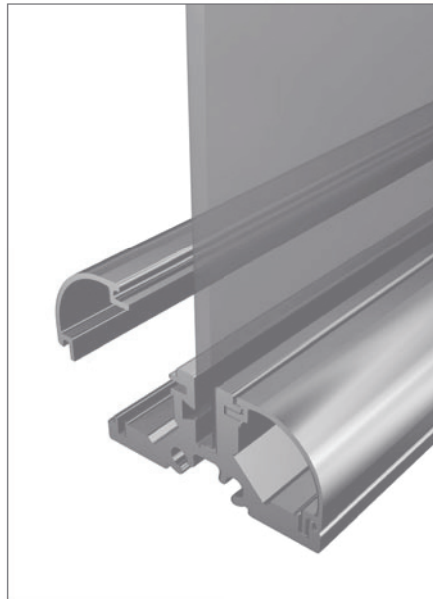
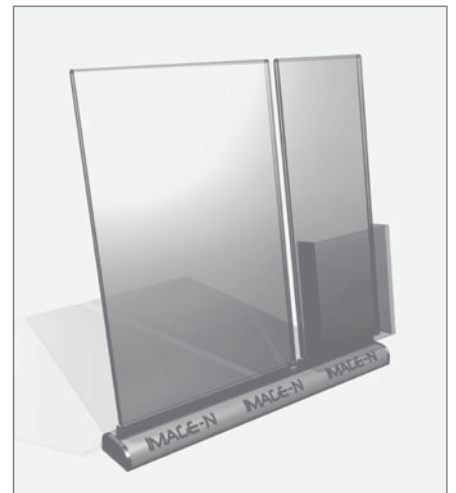
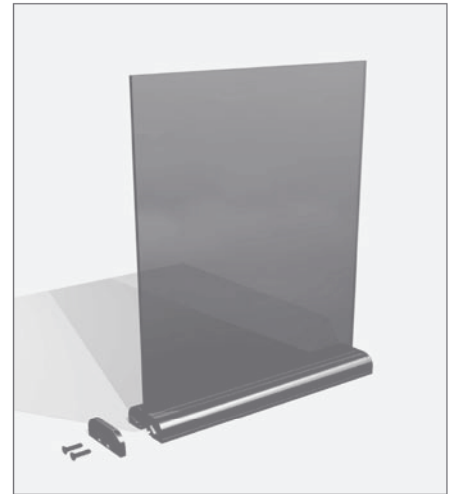


Image-N14 can be used as a free standing display on a counter, desk or fixture, or permanently fitted to a wall or a fixture.



With its incredible versatility, Image-N offers the ability to mix and match components for complete customisation. As your needs evolve, you can avoid costly sign and display replacement with its interchangeable accessories and updatable graphic options.

Extruded Aluminium T section with one Gripflex™ slot and two M4 fixing bosses for accessories. Can be used with N16 corner inserts as a trim or to cover cables.



Accessories N14



Simply 'Push To Fit' the graphic panels and accessories in the Gripflex™ slot Image-N gives incredible flexibility to change and enhance your display.

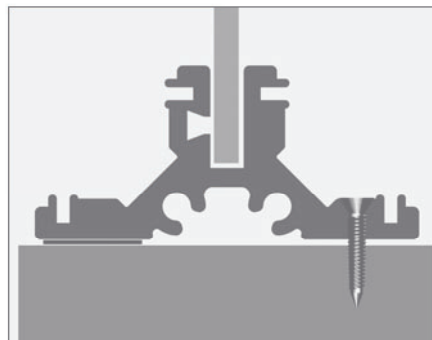
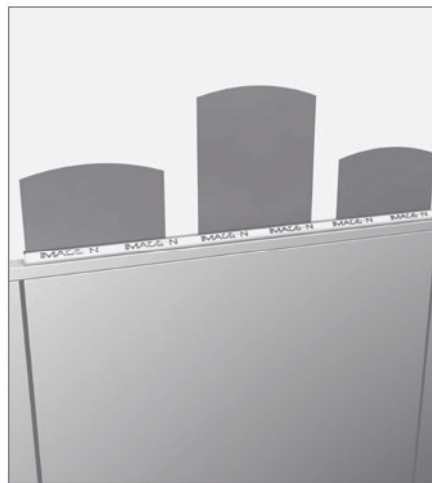
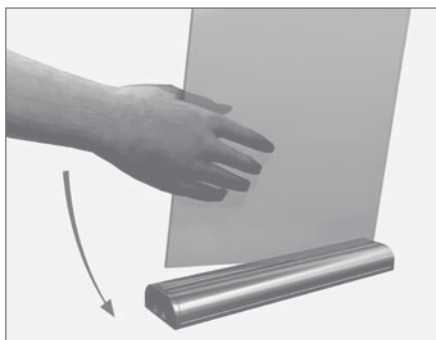


Image-N14 can be used fitted securely to fixtures with screws, bolts or adhesive tapes.

Applications + Uses

- Product Displays
- Floor Directories
- Counter Display
- Window Display
- Directional Signs
- Literature Holders
- Digital Screen Holders
- Signs
- Point-Of-Sale
- Fixture Enhancement



Standard Units

See our price list or website for standard configurations and prices or choose the components to your own requirements.



N16 can be used as a decor strip in the corners of N14.

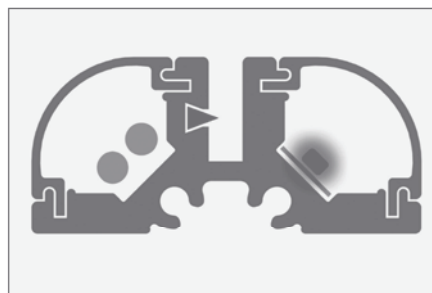


Image-N16 corner section can be used by sliding into place to cover power or data cables.

Alternatively a plastic strip can be clipped into place. This could incorporate graphics or be backlit with LEDs.

System Costs

Image-N is surprisingly affordable because costly accessory fittings are not required.

Should you require a specialised display, Tagi's design team can produce a custom design to meet your specific needs.

Bridge House, Bridge Street, Church, Accrington, Lancashire, England BB5 4HU

Tel: + 44 (0) 1254 385200

Fax: +44 (0) 1254 384466

Email: sales@tagisystems.co.uk

www.tagisystems.co.uk